



 **Macrolux<sup>®</sup> AM**

---

**POLYCARBONATE WITH  
ANTIMICROBIAL PROPERTIES**





**MACROLUX ANTI MICROBIAL IS IDEAL FOR ANY APPLICATION IN WHICH ITS REQUIRED TO MAINTAIN CLEANLINESS STANDARDS.**

**Provides a 99.9% reduction of bacterias or microbes that can be formed on the panels surface.  
Results obtained from the JIS Z 2801: 2010 test.**

Macrolux AM panels are treated with an Anti microbial technology during their production process, making the AM agent to form part of the panel, providing an effective and long lasting protection.

### Applications

- Processing areas for food/vegetable and cannabis greenhouses.
- Areas requiring FDA (Food and Drug Administration) standards for processing and packaging consumables.

### Benefits/ Features

- High light transmission, optimizes plant growth.
- High insulation value with multi wall structure.
- Class A and CC1 fire rating certified.
- Available with a 10 Year Limited Warranty & 10 Year Non Prorated Warranty



## Product Range

PRODUCT RANGE						
	2w			3w		
Thickness (mm)	6mm	8mm	10mm	8mm	10mm	16mm
Weight (lb/ft2)	0.26	0.31/0.35*	0.35/0.41*	0.31/0.35*	0.35/0.41*	0.55
Weight (g/m2)	1300	1500/1700*	1700/2000*	1500/1700*	1700/2000*	2700
Light Transmission (%)						
Clear	80	80	80	72	72	73
Opal	55	54	54	54	54	n/a
HD Soft White	n/a	77	n/a	n/a	n/a	66

\*Heavy Option

## Special layers

**No Drip** – Anti condensate that inhibits the formation of condensation into droplets by reducing surface tension making the condensation run off the sheet into the gutters or drain.

**2 UV** - Two sided UV protection for superior resistance against UV rays which helps maintain long term high light transmission and provides cutting and installation advantages.

**Light Deprivation Panel** – 100% Opaque multiwall polycarbonate sheet with the option of being in different configurations, Black, White/Black or White/Black/White. This sheet is designed for the end and side walls of a greenhouse which require a light deprivation system.

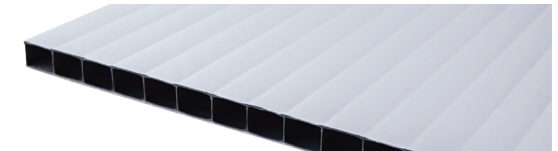
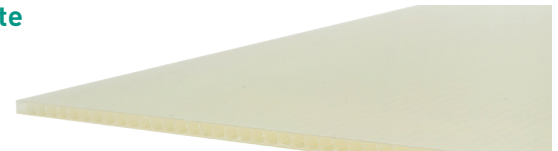
## Color Range

**HD Soft White**

**Opal**

**Clear**

**Opaque**







1. The installation must comply with the IMSA Plastics guidelines for warranty to be valid. Local authorization may be required.
2. Installation guidelines available on request.  
For additional information or questions contact  
Macrolux CANADA at 800.268.7410